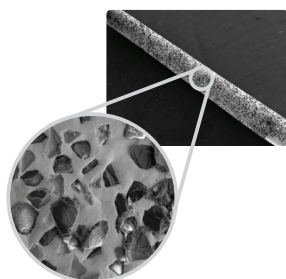


BL Tip

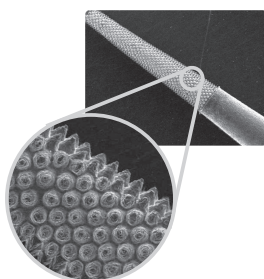
INSTRUCTION FOR USE

INTRODUCTION

B&L's BL Tips are used for conventional or micro endodontic treatment using a microscope, locating the concealed orifices and removing the secondary and calcified dentin inside the cavity or pulp stones. Unlike the conventional diamond-coated endodontic tips, BL tips have integrated sharp abrasive micro-projections into its main body to ensure longevity of its abrasiveness and its biocompatibility.




< Conventional Endo Tips with Diamond Coating >



< B&L's BL Tip >

Tip Category	Compatible Ultrasonic scaler	Recommended Intensity
A (ex: BL-1-A)	SATELEC	20~30% of the maximum
E (ex: BL-1-E)	EMS	10~20% of the Maximum

 Since all the available BL Tips are intricate in their details and to be used exclusively for the root canal treatment, they should be used with extreme care and the intensity should be set to the low setting depending on the dental ultrasonic unit.
The recommended intensity level: 10% - 30% of the maximum intensity.

INTENDED USE

The BL Tip non-surgical ultrasonic tips installed to the dental ultrasonic scaler hand-piece is used for removing dental calculus or dentin.


INSTRUCTIONS FOR USE

- ① Install the appropriate tip to the hand piece of the ultrasonic scaler by using the wrench. Do not use excessive force to tighten the tips.
- ② After BL tip is installed to the hand piece, please make sure the water is being sprayed through the water sprout prior to use.
- ③ BL tips are designed to remove the targeted dentin by applying either vertical or horizontal vibrational motion and energy. Please avoid applying excessive lateral and apical pressure.
- ④ Please avoid direct contact with the metal or ceramic restorative materials with the tip.








CLEANING AND STERILIZATION


Be sure to sterilize the tip according to the guideline below.


- ① Use a mild detergent and an ultrasonic washing machine.
- ② Be sure to dry the tips completely before cleaning and sterilization.
- ③ Sterilize the tips at a minimum of 135°C(275°F) for 3 minutes using an autoclave.
- ④ Avoid contacting other instruments after sterilization.

-  ① Please use the appropriate water spray level and use the lowest possible intensity to remove dentin following the recommendation on the previous page.
- ② Both the operator and the assistant should wear protective mask and surgical gloves at all times to ensure an aseptic surgical field.
 - ③ A modified pen grip should be used to hold the hand piece by tightly stabilizing it with fingers.
 - ④ When removing dentin with the tip, do not use excessive force to avoid the tooth fracture and crack.
 - ⑤ Please contact the tooth surface with the tip intermittently. Avoid excessive removal and heat generation by contacting the tooth surface continuously for more than several seconds.

SYMBOL DESCRIPTION

 Date of manufacture	 Sterile using steam or Dry heat	 Attention, See instruction for use
 CE certificate logo	 Batch or Lot code	 Europe Representative
 Manufacture		

 Emergo Europe Molenstreet 15, 2513 BH, The Hague, The Netherlands
Tel. +31 70 345 8570 Fax. +31 70 346 7299

 B&L Biotech USA, Inc. 225 City Avenue Suite 107, Bala Cynwyd, Philadelphia PA, USA 19004 Tel : +1 (877) 452-2651

AVAILABLE TYPES and APPLICATIONS

BL-1



- ① Tip has a very sharp end, which enables an easy penetration through the obstruction and an efficient removal of the pulp stone (micro projection size: 100um) (Note: The tip has an active tip and must be used with care to avoid ledging or perforation)
- ② For convenient removal of Gutta Percha (GP) in retreatment RCT cases

BL-2



- ① Tip end is round shaped, which ensures the safe access to the canal orifice (micro projection size: 50um)
- ② For an easy removal of the gross dentin during the access treatment
- ③ For an easy removal of the secondary concealing MB2 (Mesio Buccal 2 canal)

BL-3



- ① Tip end is hammer (cylindrical) shaped with micro projections at the bottom and sides, which enables an effective removal of the secondary dentin and pulp stone on the canal wall and floor of the pulp chamber floor
- ② For an efficient removal of the calcified pulp horn to enhance visibility of the access preparation

BL-4



- ① Working end of the tip is shaped like a disk, which enables efficient planing of pulp stones or irregular dentin on the floor of pulp chamber. (micro projection size: 50um)

BL-5



- ① Tip's diameter is smaller and the length is larger than BL-1's and BL-2's, which facilitates an easy removal of the isthmus between canals in retreatment cases. (micro projection size: 50um)
- ② For an efficient preparation in the coronal 1/2 of the root, in order to secure a space for an insertion of post

BL-6



- ① Similarly shaped as BL-5, but without micro projections at the working end
- ② For an easy access along a narrow and thin root canal
- ③ For troughing around the broken instruments in the narrow canals



Notes: Do not contact metals such a metal post, porcelain, filling materials or prosthetic materials to avoid breakage.