

# B&L Biotech

## Product Catalog



B&L Biotech was established by several dentists.

These dentists, both of whom specialize in endodontics, share a common goal of providing and improving the quality of treatment delivery and patient care with unprecedented innovation, excellence, quality, service and product development.

B&L is one of the fastest rising companies in the global dental community. B&L has partnered with a leading dental company to introduce the first cordless heated plugger system and gutta percha delivery system, known respectively as the B&L Alpha and B&L Beta. B&L has many innovative products to offer, including patented micro-projection ultrasonic tip technology, and is working to develop many more products.

B&L currently services over 32 countries. In May 2010, B&L opened its first facility in the USA, just outside of Philadelphia, to better serve the global dental community.

B&L Biotech continues to expand its pipeline to innovative products while maintaining quality, excellence and service to the worldwide dental community.



# Obturation Devices

## Ultrasonic Tips





*Cordless Obturation devices*

**SuperEndo- $\alpha^2$**

**SuperEndo- $\beta$**

**BL-S Kondenser**

*Endodontic Ultrasonic Tip with Micro-projection*

**BL TIP**

*Endodontic Microsurgical Ultrasonic Tip with Micro-projection*

**JETIP**

*Removal of Broken Instruments / Troughing & Irrigation*

**CK TIP**

*Post Removal Tip*

**VIBRAPOST**

*Implant Scaler Tip*

**IS TIP**

*Scaler Tip*

**S TIP**



*Ultrasonic Tip Accessories*

**Tip Valet**

**Tip Wrench**

*Microsurgical Instruments*

**JETIP Instrument Basic Set**

**JETIP Instrument Suture Set**

*Bendable Periosteal Elevator for Surgical Treatment*

**KimTrac**

*Endo Stand*

**BL Pot**

Cordless Obturation Device for Optimal Warm Vertical Condensation

# SuperEndo- $\alpha^2$



## Maximizes user convenience

- Unique design that incorporates cordless and ergonomic features.

## Balance

- Great weight distribution for ease of use.

## Cordless

- No limit on usage, reduces fatigue on hand and wrist.

## Hexagonal keyholes

- Six keyholes (in increments of 60 degrees) on the connecting joint of the plugger safely secure and prevent rotation of the plugger during use.

## Extended battery time for operator

- 4 hours of continuous use on a single charge, equivalent to about 1 week of endodontic treatment in a busy practice.

Item code : ASK



Accessories for SuperEndo-α<sup>2</sup>

# BL Plugger

**Pluggers for SuperEndo-α<sup>2</sup>**

· The greatest number of choices: 13 items, including pluggers, spreaders, and a hot testing tip.



Accessories for SuperEndo-α2

# Plugger Stand

For Storing BL Pluggers

You can store and autoclave BL pluggers together safely.

Item code : PSTAND



Accessories for B&L-α2

# Paper Point / GP Point



| Model       | Size   | Item Code | Packages |
|-------------|--|-----------|----------|
| Paper Point | #15 / .04                                    | PP1504    | 200 EA   |
|             | #20 / .04                                    | PP2004    |          |
|             | #25 / .04                                    | PP2504    |          |
|             | #30 / .04                                    | PP3004    |          |
|             | #35 / .04                                    | PP3504    |          |
|             | #40 / .04                                    | PP4004    |          |
|             | #50 / .04                                    | PP5004    |          |
| GP Point    | Assorted type<br>(#25/.06, #30/.04, #35/.04) | AGP       | 60 EA    |
|             | #25 / .06                                    | GP2506    |          |
|             | #30 / .04                                    | GP3004    |          |
|             | #35 / .04                                    | GP3504    |          |
|             | #40 / .04                                    | GP4004    |          |



Cordless Obturation Device for Optimal Backfill (filling)

# SuperEndo-β



## Unique design and engineering

- Incorporates the 360 degree Swivel Needles, as well as cordless and ergonomic features, for maximum user convenience.

## Balance

- Great weight distribution for ease of use

## Cordless

- No limit on usage, reduces fatigue on hand and wrist

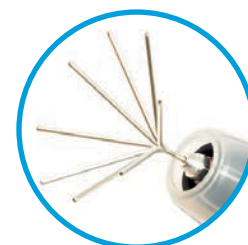
## Secondary safety feature against accidental burns

- Thermal protector cap that prevents accidental burns from a hot needle or gutta percha.

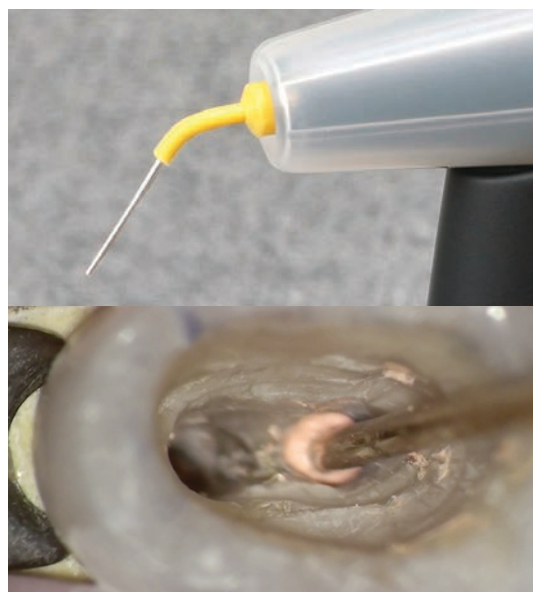
## Extended battery time for operator

- 4 hours of continual use on a single charge, equivalent to about 1 week of endodontic treatment in a busy practice.

Item code : BSK



Needle Swivel for Easy Access



Accessories for SuperEndo-β

# Needle



21mm 23G

22mm 20G

24mm 23G

26mm 25G

28mm 23G



Needles for SuperEndo-β

| Model         | Length of needle | Gauge       |
|---------------|------------------|-------------|
| BSN2123       | 21 mm            | 23 (0.57mm) |
| BSN2220       | 22 mm            | 20 (0.82mm) |
| BSN2225       | 22 mm            | 25 (0.45mm) |
| BSN2420       | 24 mm            | 20 (0.82mm) |
| BSN2423       | 24 mm            | 23 (0.57mm) |
| BSN2425       | 24 mm            | 25 (0.45mm) |
| BSN2625       | 26 mm            | 25 (0.45mm) |
| BSN2820       | 28 mm            | 20 (0.82mm) |
| BSN2823       | 28 mm            | 23 (0.57mm) |
| BSN5020 (VET) | 50 mm            | 20 (0.82mm) |



Accessories for SuperEndo-β

# Gutta Percha Pellet

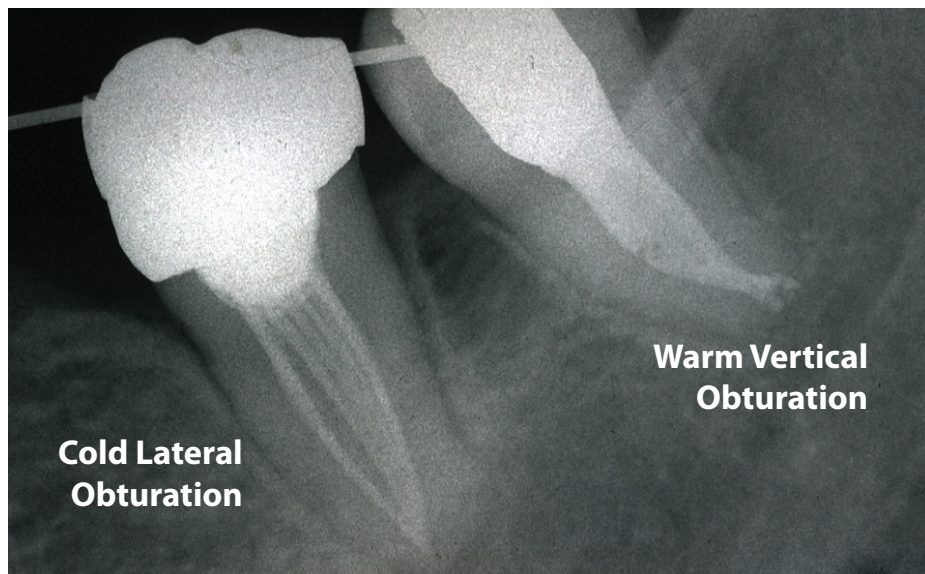


Gutta Percha Pellets for SuperEndo-β

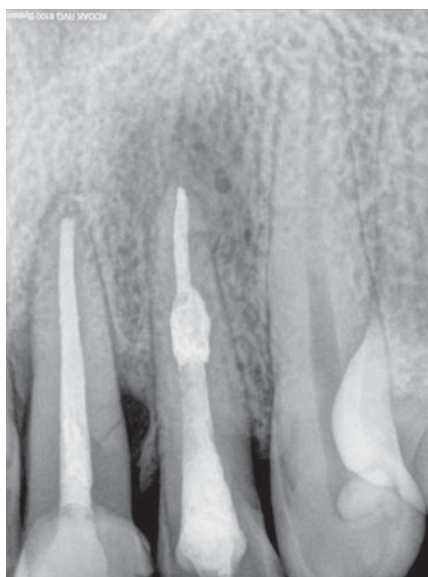
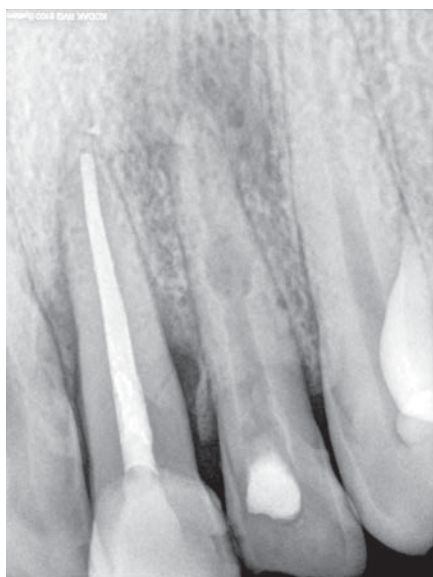
| Model   | Type         | Quantity of GP |
|---------|--------------|----------------|
| BGPSOFT | Soft Type    | 100 EA         |
| BGPREG  | Regular Type | 100 EA         |
| BGPHARD | Hard Type    | 100 EA         |



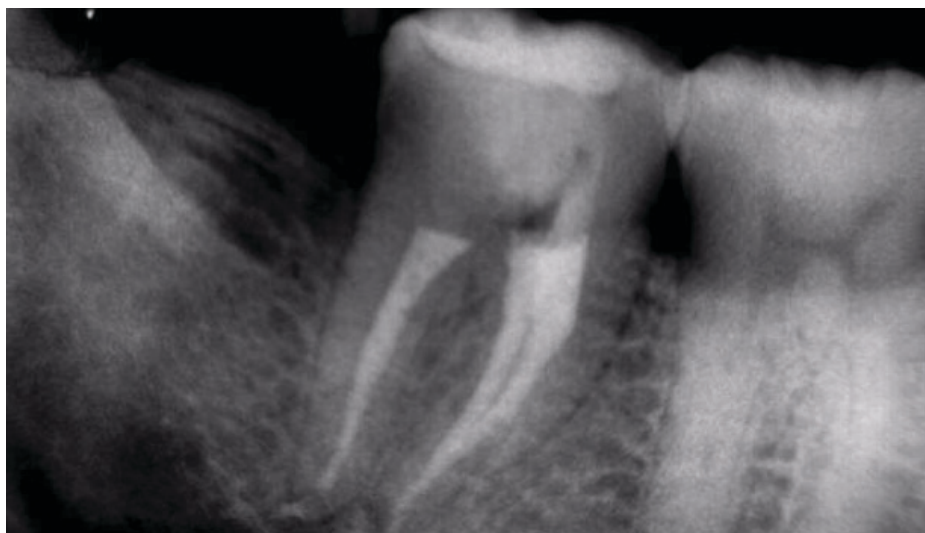
# Clinical Cases



Prof. Baek



Dr. Isabelle Portenier



Dr. Lissette Ramirez

# BL-S Kondenser



## Wide variety

- BL-S Kondensers may be purchased individually or in a full set of 4.

## Efficiency of use

- Handles are color-coded depending on size for faster selection of the needed condenser.

## Range of use

- BL-S Kondensers are great for any type of canal anatomy.

## Multipurpose features

- One end, made of nickel titanium, can be used for treatment in curved canals. The other end, flat and made of stainless steel, is ideal for compaction in the coronal and middle thirds of the canal.

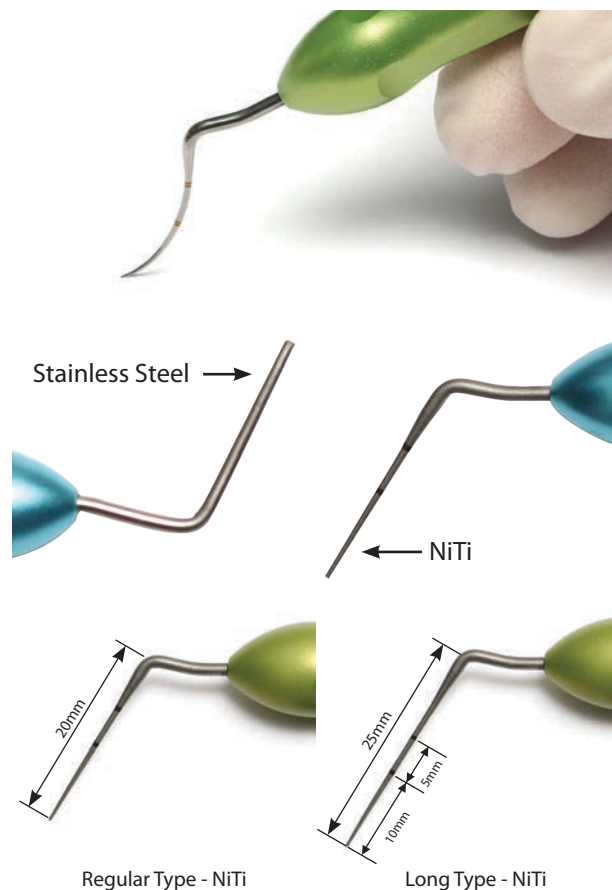
## Lightweight design

- Handles are designed to fit comfortably into the user's natural grip.

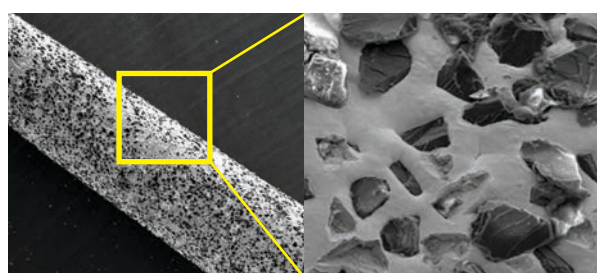
## Increased control

- Dimpled grips allow the condenser to be held firmly.

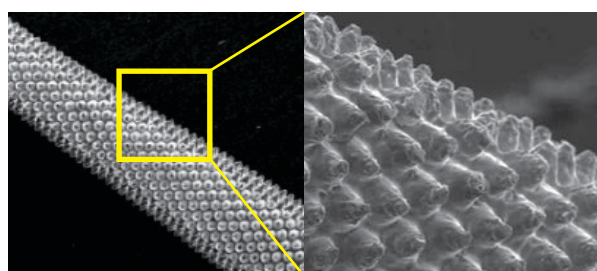
| Model                          | Product information       |
|--------------------------------|---------------------------|
| BCONSET /<br>BCONSET Long Type | SET of 4 (35, 40, 50, 60) |
| BCON35 /<br>BCON35 Long Type   | 35 NiTi / 70 SS           |
| BCON40 /<br>BCON40 Long Type   | 40 NiTi / 80 SS           |
| BCON50 /<br>BCON50 Long Type   | 50 NiTi / 100 SS          |
| BCON60 /<br>BCON60 Long Type   | 60 NiTi / 120 SS          |



# BL TIP



Diamond coated Tip



BL TIP with Micro-projections

## Longevity and Safety with Micro-projections

- BL Tips have sharp abrasive micro-projections integrated onto the main body of the tip.
- Unlike conventional diamond coated endodontic tips, whose coating wears off during surgery, tips with microprojections are more resilient and efficient in cutting

## Manageable Elimination with a Variety of Shapes and Sizes

- The end of the BL Tips comes in a variety of shapes and sizes making it convenient for the doctor to effectively control the amount of dentin removal.
- 100µm Micro-projections : ideal for removing larger quantities of dentin.
- 50µm Micro-projections : ideal for more precision-based refinement.

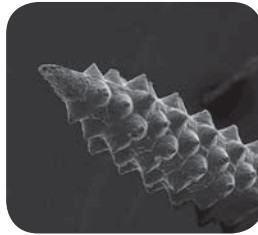
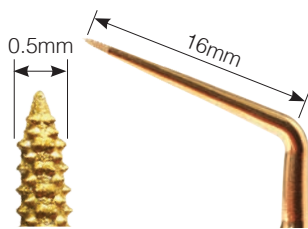
## Versatility

- BL Tips are useful not only in accessing the root canal, but also in enlarging the coronal aspect of the root canal because the end of the tip works in every direction.

## Appropriate power level

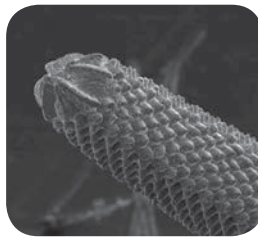
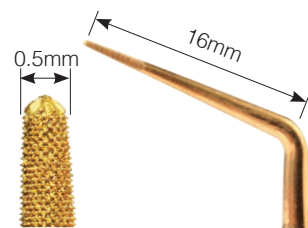
|          |           |      |      |           |           |
|----------|-----------|------|------|-----------|-----------|
| BL-1     | BL-2      | BL-3 | BL-4 | BL-5 / 5B | BL-6      |
| SATELEC® | 20% · 30% |      |      | Under 20% | 20% · 30% |
| EMS®     | 10% · 20% |      |      | Under 10% | 10% · 20% |





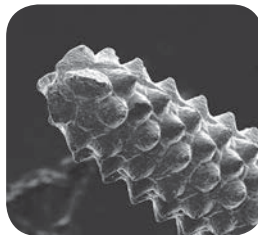
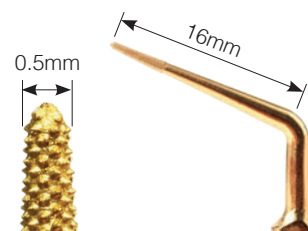
#### BL-1 (100µm Micro-projections)

- Removal of pulp stone, calcified dentin
- Location of the MB2 canal and hidden canals
- Removal of gutta percha and paste materials



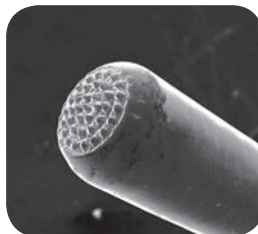
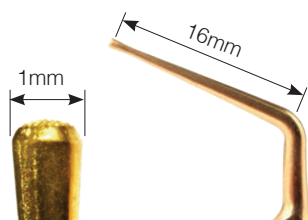
#### BL-2 (50µm Micro-projections)

- Removal of dentin and calcified dentin
- Location of second MB canal and hidden canals



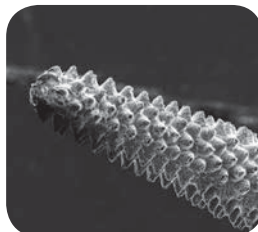
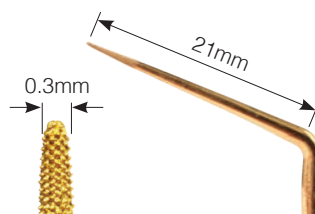
#### BL-3 (100µm Micro-projections)

- Use at a higher power, higher speed
- Removal of secondary dentin and pulp stones
- Resistance to breakage



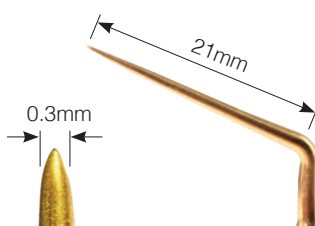
#### BL-4 (50µm Micro-projections)

- Efficient removal of pulp stones or irregular dentin on the floor of the pulp chamber.
- Horizontal planing of the pulp chamber floor.



#### BL-5 / BL-5B (50µm Micro-projections)

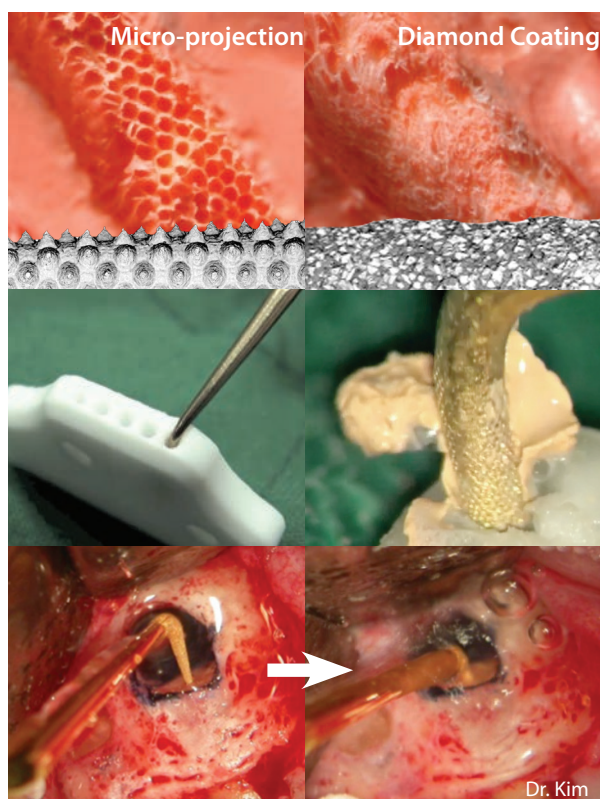
- Smaller & longer than BL-1 and BL-2
- The sharpest and longest shape to enable efficient preparation in the coronal half of the canal and create a space for the insertion of a file.
- Bendable tip so that its user can change it to his or her desired angle.



#### BL-6 (No Micro-projection)

- Easy access to long and narrow root canals.

# JETIP



## Bendable Apical Surgery Tips

- JETip is an apico surgery tip that allows clinicians to bend the tip to any length and angle to suit their surgical needs.

## Longevity and Safety with Micro-projection

- JETips have sharp, abrasive micro-projections integrated onto the main body of the tip.
- Unlike conventional diamond coated endodontic tips, whose coating wears off during surgery, tips with micro-projections are more resilient and efficient in cutting.

## Versatility

- JETips have a variety of shapes and sizes, so users can effectively control the amount of gutta percha and dentin removal.
- They remain stable during the removal of gutta-percha.

## Bending Jig

### Optional Length and Angle

- The Bending Jig is made of a soft material in order to provide clinicians with the freedom to choose angles and lengths without damaging the micro-projections.
- The Bending Jig has five depths(3, 4, 5, 6, and 7mm) in order to allow clinicians to bend the tip to different lengths.
- One aperture may be used up to 2-4 times.

- All the tips are compatible with Satelec and EMS Ultrasonic units, except for JT-4. JT-4 is compatible only with Satelec.

Appropriate power level

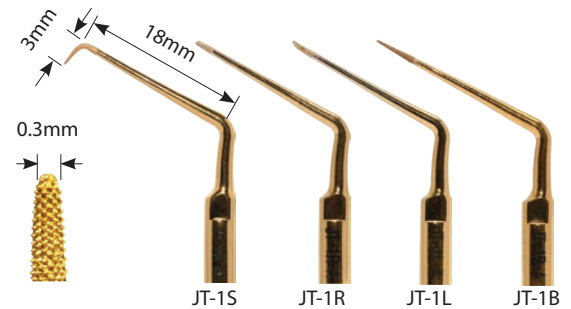
|          |           |           |           |
|----------|-----------|-----------|-----------|
| JT-1     | JT-2      | JT-3      | JT-4      |
| SATELEC® | 10% · 20% |           | Under 10% |
| EMS®     | Under 10% | 10% · 15% |           |

### JT-1 series only for Anterior

Bent Body Angle: 120°

Micro-projection Size: 50µm

- JT-1B represents the popular bendable tip. This tip allows clinicians to bend the tip ONLY once in one direction to any length and angle to suit their clinical needs.
- JT-1S has one angle tip with a "straight" body.
- JT-1L has two angles bent to the left with a "straight" body.
- JT-1R has two angles bent to the right with a "straight" body.

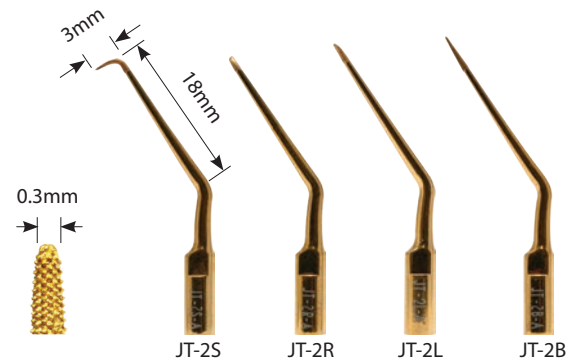


### JT-2 series for Universal (Anterior, Posterior)

Bent Body Angle: 150°

Micro-projection Size: 50µm

- JT-2B represents the popular bendable tip. This tip allows clinicians to bend the tip ONLY once in one direction to any length and/or angle to suit their clinical needs.
- JT-2S has one angle tip with a "straight" body.
- JT-2L has two angles bent to the left with a "straight" body.
- JT-2R has two angles bent to the right with a "straight" body.

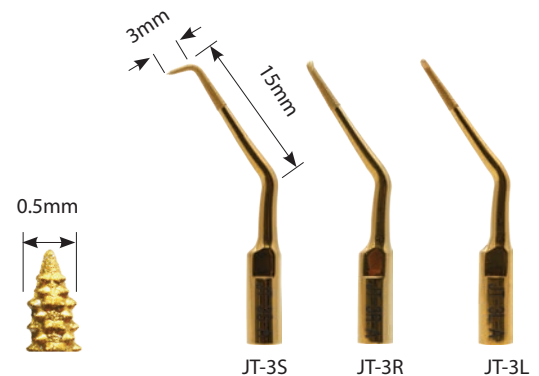


### JT-3 series for Large canal

Bent Body Angle: 150°

Micro-projection Size: 100µm

- JT-3S has one angle tip with a "straight" body.
- JT-3L has two angles bent to the left with a "straight" body.
- JT-3R has two angles bent to the right with a "straight" body.

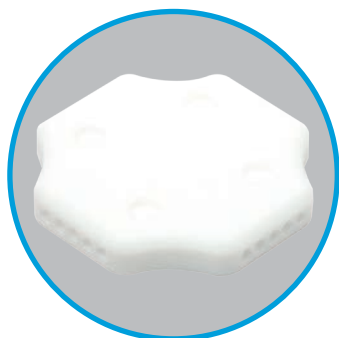
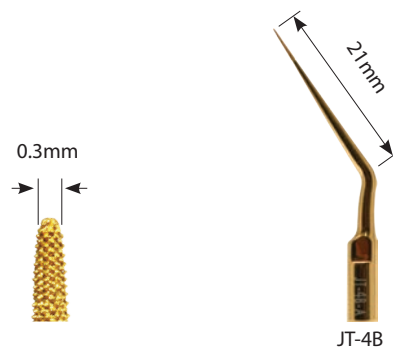


### JT-4 series for Isthmus

Bent Body Angle: 150°

Micro-projection Size: 50µm

- JT-4B : The bendable tip may only be bent once to reach the desired angle.



**Jig for JETIP (bendable types) and BL-5B.**

Item Code : JTBj



# CK TIP



CK TIP with CK File - Irrigation

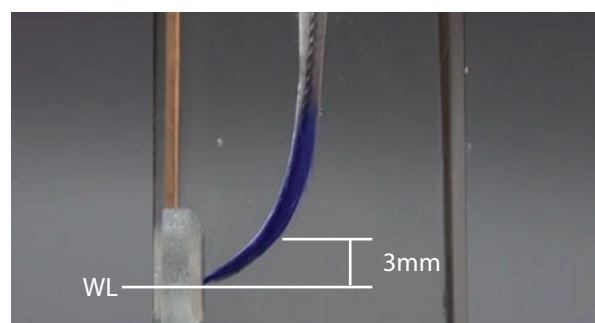


CK TIP with CK Needle - Troughing

## For ultrasonic energy in a root canal

- Ultrasonic vibration through a file ensures an efficient cleaning of the root canal system through acoustic micro-streaming.

| Model Name | Compatibility  | Bent Angle |
|------------|----------------|------------|
| CK1E       | EMS scaler     | 120°       |
| CK1A       | SATELEC scaler |            |
| CK2E       | EMS scaler     | 90°        |
| CK2A       | SATELEC scaler |            |



Optimal use for CK file - 3mm above WL (Working Length)

## CK File

- Irrigation File #20, #25 #30, #35

| File              | Recommended Power Level |
|-------------------|-------------------------|
| CK FILE-20(CKF20) | 10%                     |
| CK FILE-25(CKF25) |                         |
| CK FILE-30(CKF30) |                         |
| CK FILE-35(CKF35) |                         |

## CK Needle

- Removal of separated files
- Useful in removing dentin (troughing)
- Isthmus control
- Before working with Vibrapost (post removal ultrasonic tip), using the CK Tip needle to trough around the post allows the Vibrapost to work more efficiently.

Item Code : CKN

## Post Removal Tip

# VIBRAPOST



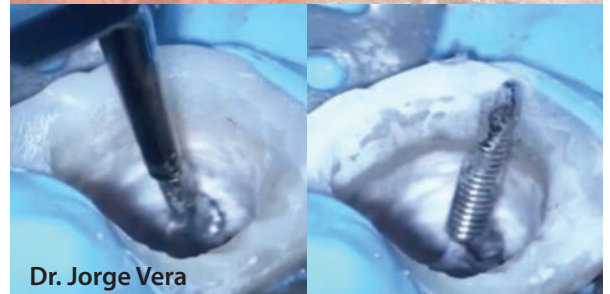
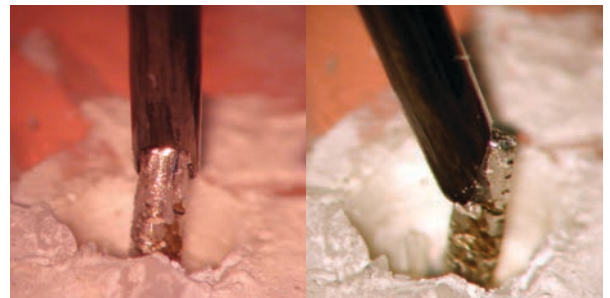
### The best choice for removing a post from a root canal

- The most efficient shape to constantly deliver the highest ultrasonic energy.
- The fastest way to remove a post.

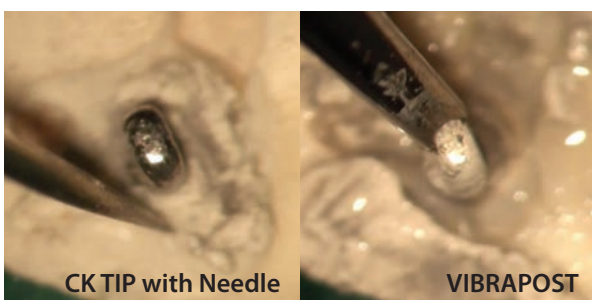
| Tip Type      | Recommended Power Level |
|---------------|-------------------------|
| VP-A(SATELEC) | High Power              |
| VP-E(EMS)     |                         |

### Caution!

In order to avoid potential damage to the periodontal ligament from excessive heat, be sure to work with water and refrain from engaging the post for more than 15 seconds at a time



Dr. Jorge Vera



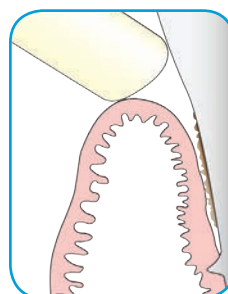
CK TIP with Needle

VIBRAPOST

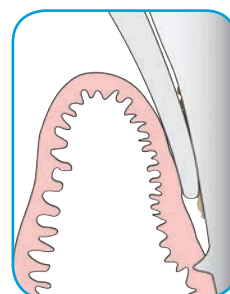


Dr. Carlos Saucedo

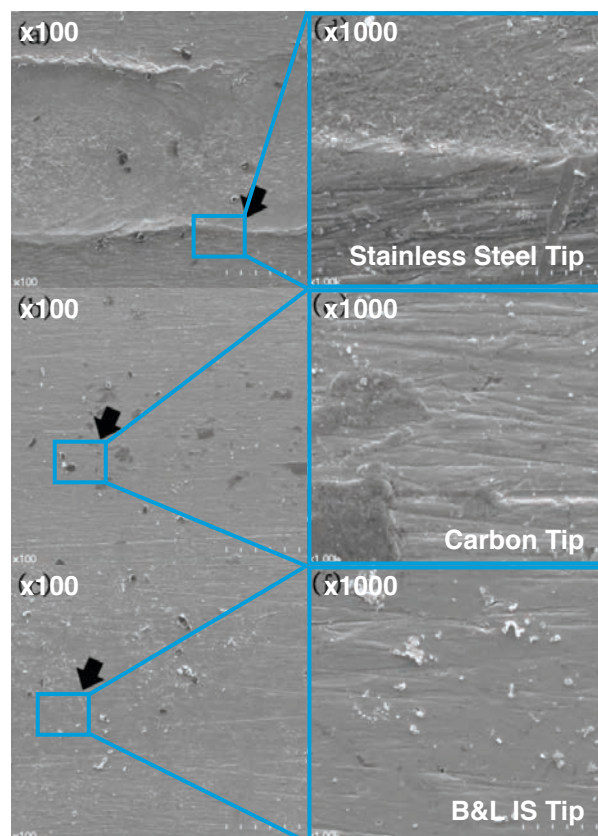
# IS TIP



Normal TIP



B&L IS TIP



## The dependable choice for peri-implant tissue management

### Why choose B&L's implant scaler tip?

- Metallic ultrasonic tip designed for scaling polished implant surfaces.
- Compatibility with electric piezo unit.
- Optimal scaling efficiency with minimal abrasiveness to the external polished surface of the implant.
- Ideal periodontal management of implant.
- Safer and more efficient than other plastic and titanium implant curettes.
- Ideal for removal of residual cement.

### Sharpness

- Avoids excessive opening of the gingival sulcus.

### Accessibility

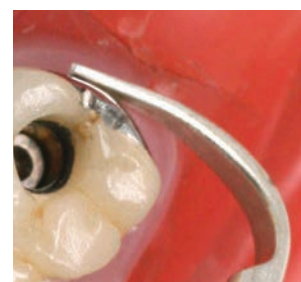
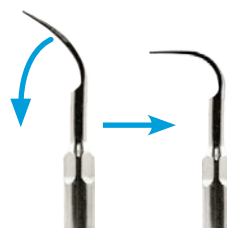
- Provides easier access to the distal lingual gingiva of a molar.
- Bendable tip point can be used to reach hidden areas.

### Usage

- Ideal for periodontal maintenance of the implant.
- Ideal for treatment of peri-implantitis.
- Ideal for removal of excess cement.

Item Code : STS5A(SATELEC compatible)

STS5E(EMS compatible)



## Scaler Tip

# S TIP



"I was amazed with the efficiency of B&L scaler tip. It is the best scaler tip that I have used thus far."

- Dr. Sean Kim (Private Practice in New Jersey: Alumni of Columbia University)

### Excellent Durability

- Long Lifespan: The advances of the new tip allow for longer usage and maintenance of the integrity of the scaler tip's shape and function without deformation.
- The S Tip can be sterilized by chemical sterilization or autoclaving without compromising the quality and the integrity of the tip.

### Excellent Anti-Corrosive Properties

- The S Tip has anti-corrosive properties that prevent degradation of the tip even after being exposed to 5% sodium hypochlorite for 30 days. Any conventional tip will slowly dissolve under this condition.

### Biocompatibility and Optimal Efficiency

- The S Tip allows for optimal scaling results with less hassle. Conventional scaler tips can easily damage the external surface of a tooth due to the tips' rigidity and lack of resilience. However, the S Tip is composed of an advanced, resilient material that resembles the external surface of a tooth. This unique property of the S Tip provides for excellent biocompatibility with the surface of a tooth due to its optimal scaling efficiency and minimal abrasiveness.

Item Code : STS1A(SATELEC compatible)

STS1E(EMS compatible)

STL1E(Long type, Only EMS compatible)

STS2A(SATELEC compatible)

STS2E(EMS compatible)

# Ultrasonic Tip Accessories

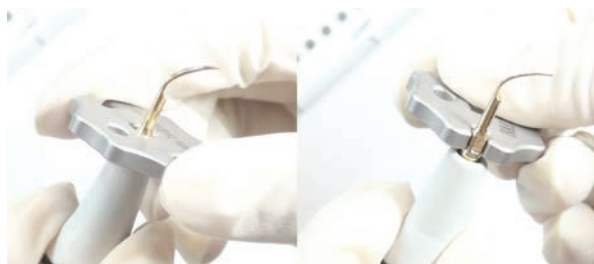
**Tip Valet for ultrasonic tips. Easy for storing and autoclaving.**

Item Code : TVALET



**Tip Wrench for ultrasonic tips.**

Item Code : WR01





# JETIP Instrument Basic Set



## JETIP Microsurgical Instrument

- Color Coded by Procedural Steps
- Comfortable Grip
- Sleek Design

## Color Coded by Procedural Steps



## Basic Kit (Aluminum Handle or Titanium Handle)



|              |   |
|--------------|---|
| Silver       | JX1, JX2, JX5, JEX, JPP   |
| Gold         | JE1, JE2, JE3, JE4  |
| Blue         | JC1, JC2, JC3, JC4, JC9, JC10, JC11, JC12, JC13, JC14, JC15, JC16 |
| Green        | JM1, JM2, JM3, JM4, JB2, JP3, JP6, JP7                            |
| Micro Mirror | JIMM1, JIMM2, JIMM3, JIMMH  |
| MTA Pallet   | MTAP  |
| B&L Wrench   | WR01  |

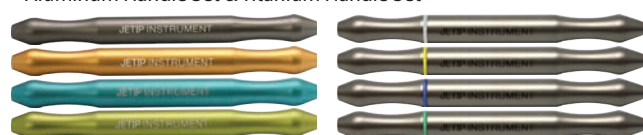
## Essencial Kit (Aluminum Handle or Titanium Handle)



|              |                              |
|--------------|------------------------------|
| Silver       | JX1, JX2                     |
| Gold         | None                         |
| Blue         | JC15, JC16                   |
| Green        | JB2, JP3, JM3, JM4, JP6, JP7 |
| Micro Mirror | JIMM1, JIMM2, JIMM3, JIMMH   |
| MTA Pallet   | MTAP                         |
| B&L Wrench   | WR01                         |

## JETIP Instrument Handle

- Aluminum Handle Set & Titanium Handle Set



Aluminum Handle

Titanium Handle

# List of Tips

## Silver Examination and Diagnosis



JX1

Endo Explorers (small size)



JX2



JX5

Dental Mirror



JEX

Endo Explorer (large size)



JPP

Periodontal Probe

## Gold Soft Tissue Management and Tissue Elevation



JE1



JE2



JE3



JE4

Incisors & Elevators

## Blue Curettes and Debridement



JC1



JC2



JC3



JC4



JC9

Curettes



JC10



JC11



JC12



JC13



JC14



JC15



JC16

Curettes

## Green Root End



JM1



JM2



JM3



JM4

Retrofilling Carriers



JB1\*



JB2

Ball Burnishers



JP3



JP6



JP7

Micropluggers



MTAP

MTA Pallet

\* JB1 is not included in Basic Set.



# JETIP Instrument Suture Set



## Suture Set for Apicoectomy

- Set of most used instruments - include a castroviejo, micro scissor, tissue forcep, and micro mirrors.
- With high durability, it can be used longer despite many cleanings and sterilizations.
- The ergonomic grip helps a dentist perform surgery longer and relieve fatigue.



Castroviejo  
JICV



Micro scissors  
JIMS



Tissue forcep  
JITF



Blade handle  
JIBH



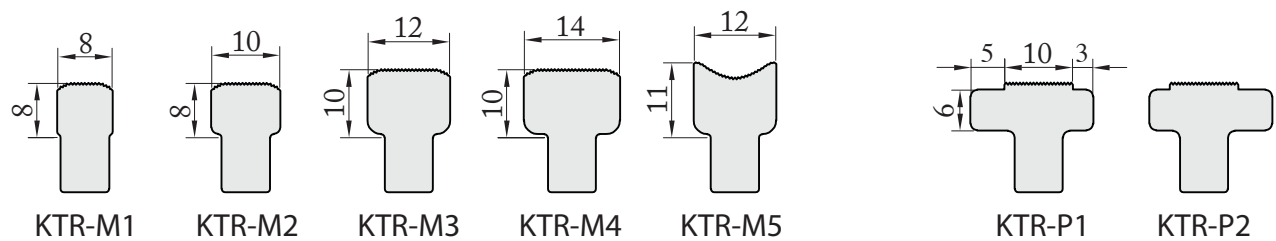
Micro mirror holder  
JIMMH



Micro mirrors  
JIMM 1,2,3

## Bendable Periosteal Elevator for Surgical Treatment

# KimTrac



### Shape Memory

- After being bent, it can be returned to its original shape. (NiTi Models)

### Serrated Edges

- Stably secures the cortical bone plate, regardless of its shape, due to the saw-toothed wheel at the end of the KimTrac.

### Various Angles

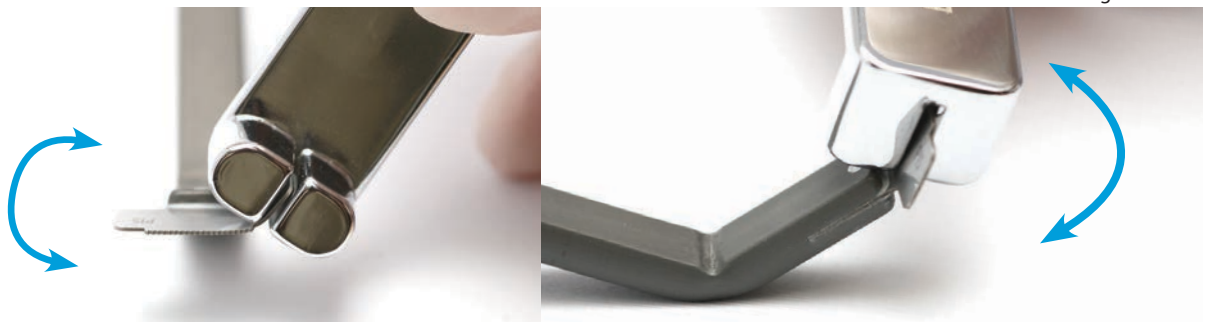
- Consists of three types of angles that make contact with the bony plate. It adheres well to both anterior and posterior locations by adjusting the left-right angle.

### KimTrac WING

- KimTrac Wing ensures easy flap retraction with highly improved visibility and accessibility of operation field.



KimTrac Wing



Endo Stand

# BL Pot



- Storage and sterilization for used files.
- Ring indicates the number of times the files have been used.
- Removes debris on files safely and easily.

## Sales Contact Information

### Global Sales

Bruce Shefsky  
bdshefsky@bnlbio.com

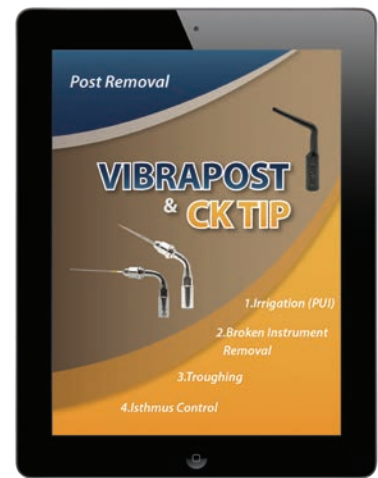
### University Sales

Lori McCarty  
lamccarty@bnlbio.com

### Latin America Sales

Ramirez Lissette  
drlissetteramirez@bnlbio.com

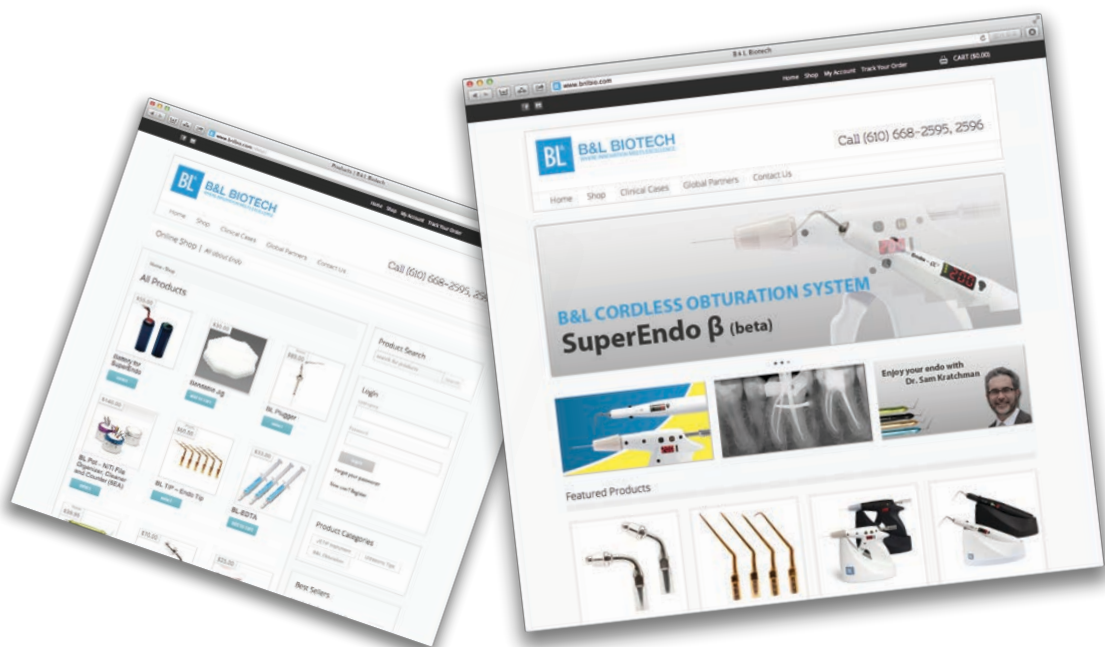
# Free B&L Biotech App for the iPad!



iPad only



## www.bnlbio.com

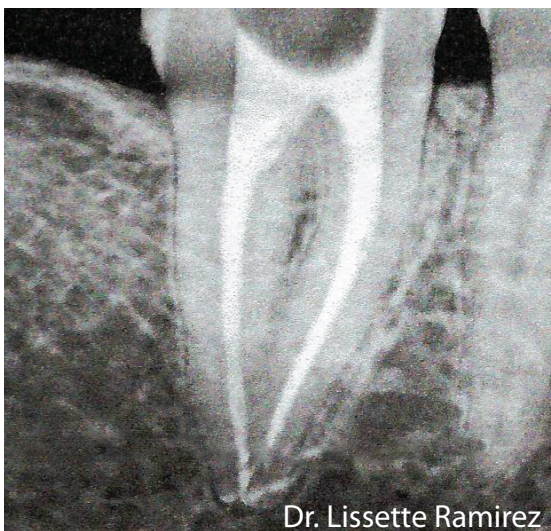
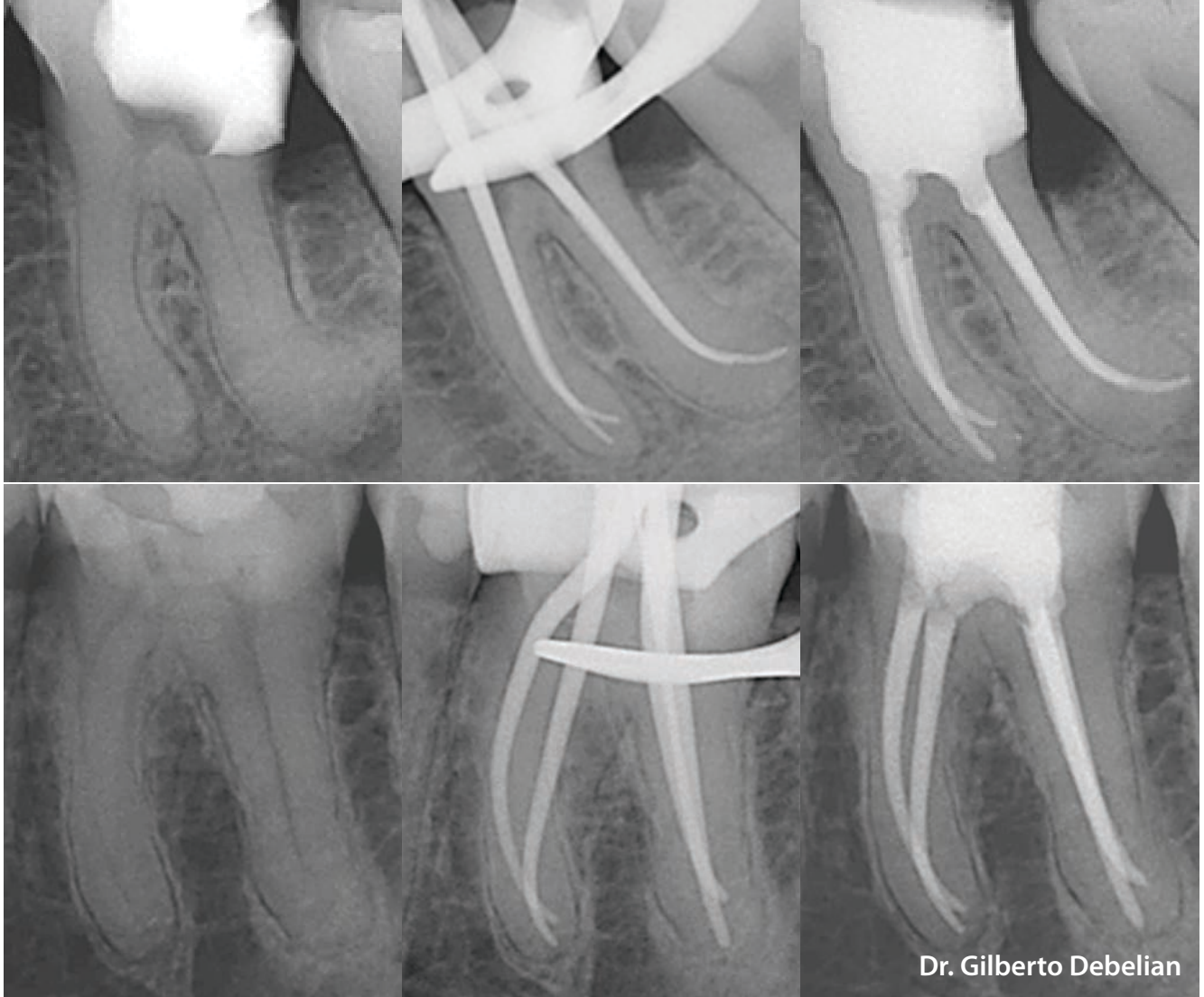


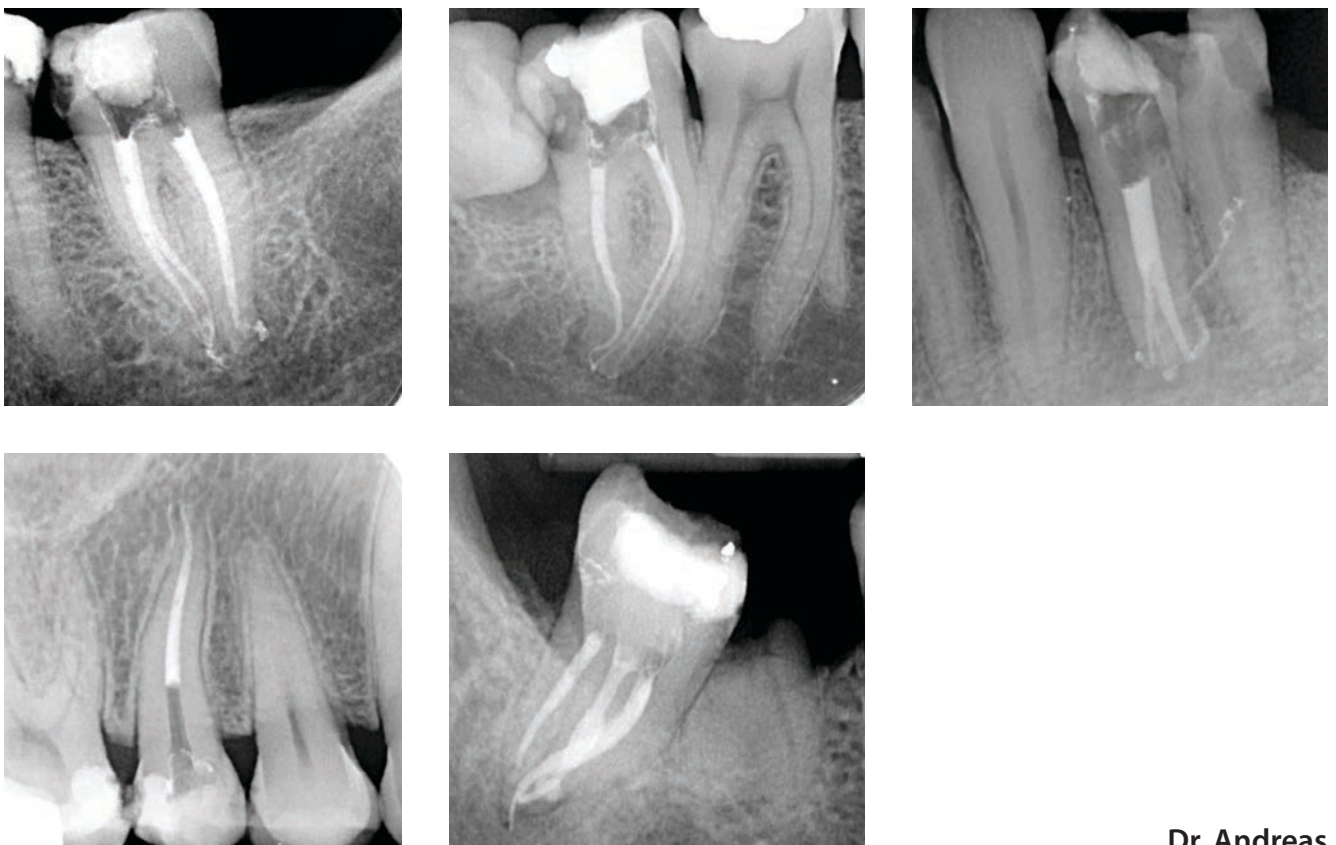
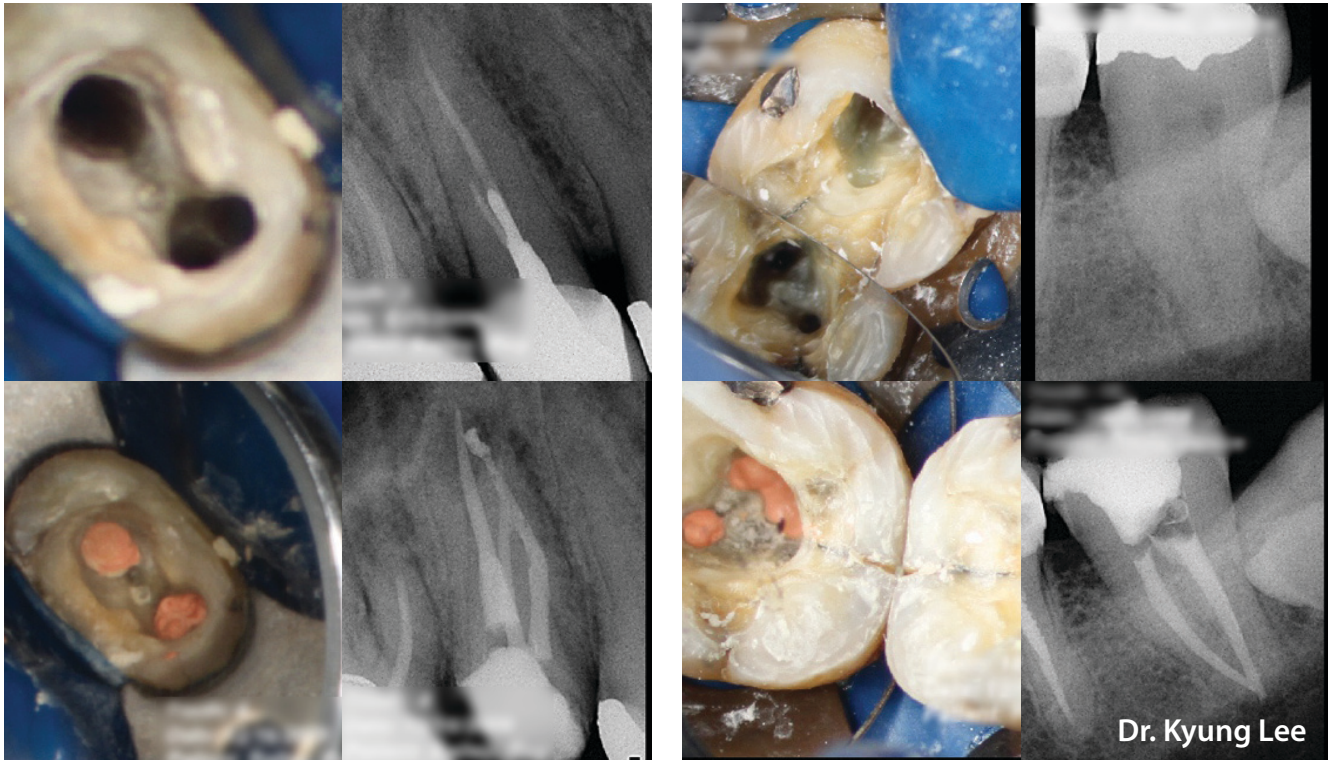
Come and check out our website!  
Product information, clinical cases, video clips, global  
partner information and more!



# Clinical Cases

SuperEndo- $\alpha^2$  & SuperEndo- $\beta$

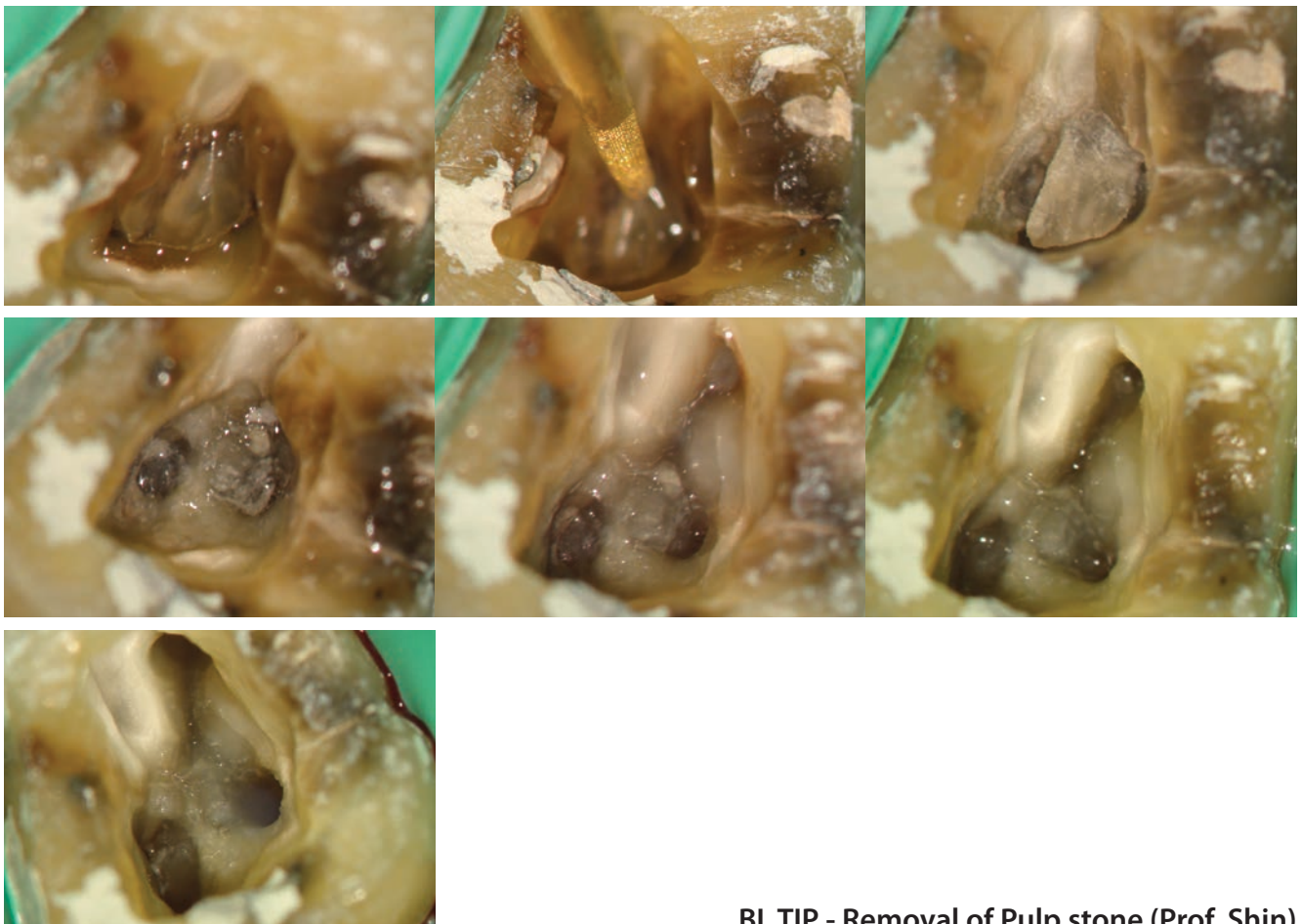
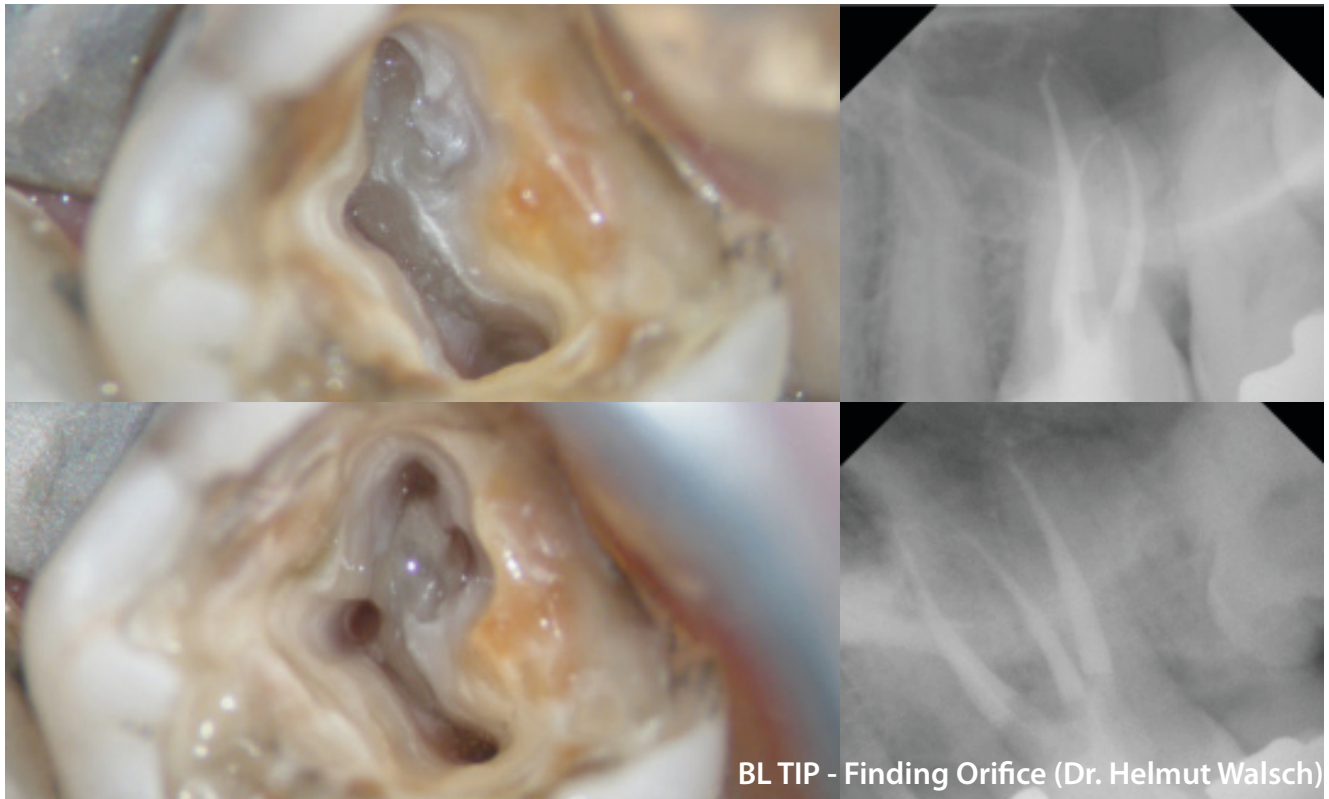


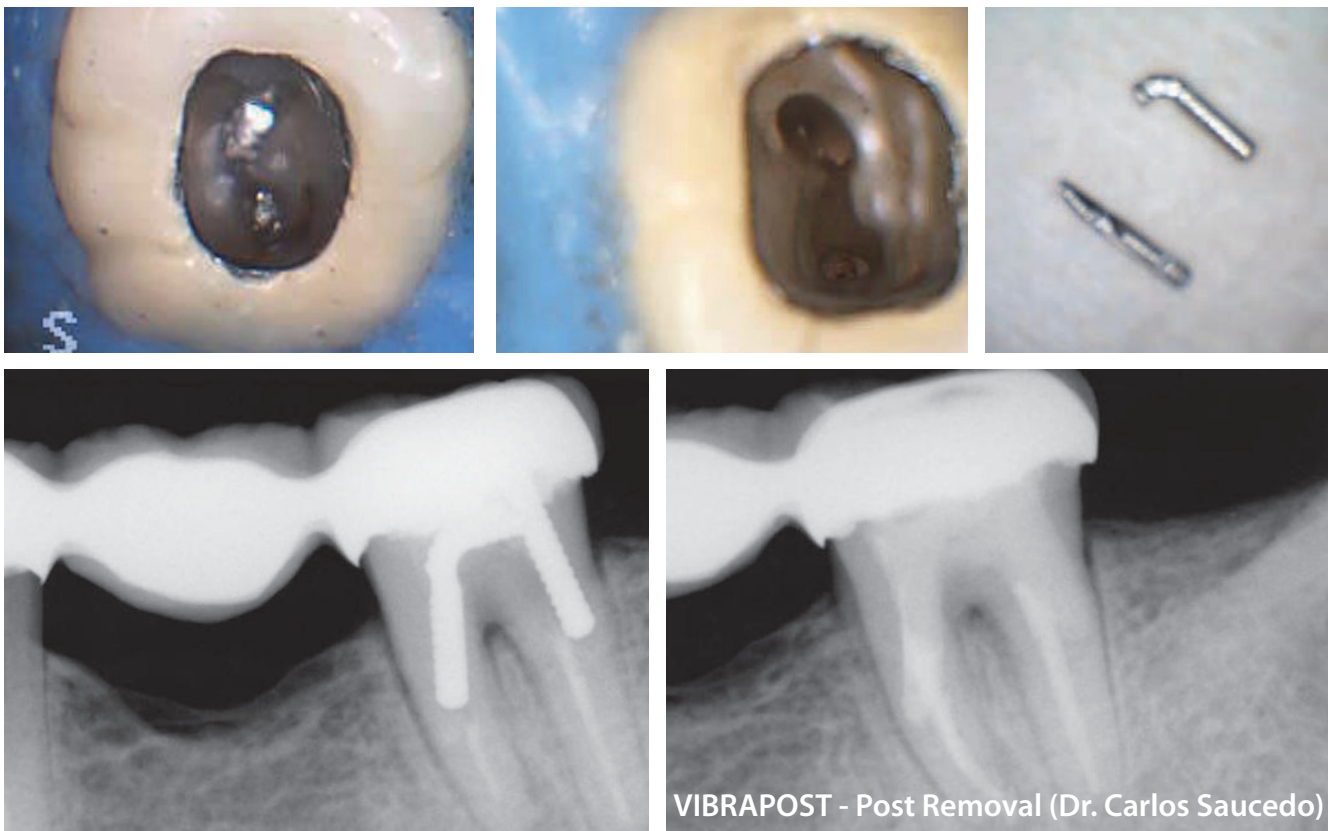
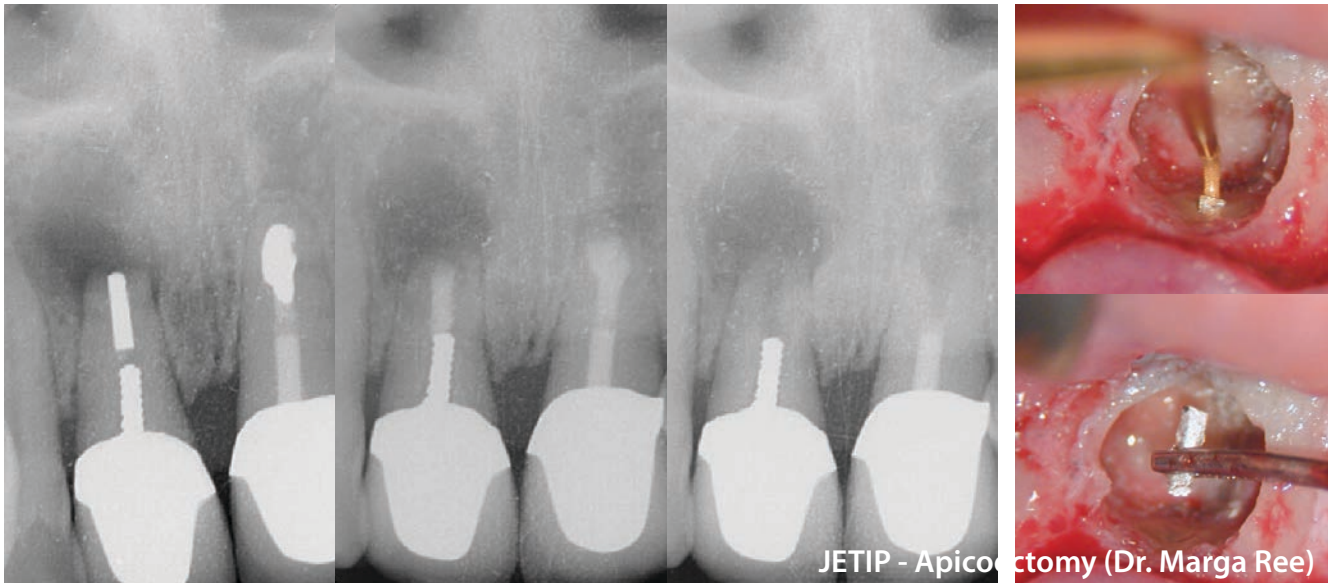


Dr. Andreas



# Clinical Cases





View video clips at <http://www.youtube.com/bnlbio>



## **B&L Biotech USA, Inc.**

225 E. City Avenue, Suite 107, Bala Cynwyd, PA 19004 USA

TEL. +1 (610) 668 2595

Toll free. (877) 452-2651 (Only USA)

FAX. +1 (610) 668-2597



**B&L BIOTECH**

## **EU Service Center**

Fa. Kotec

Guerickestr. 3 10587 Berlin, Germany

TEL +49 30 3640 7896

FAX +49 30 3670 2366

[www.bnlbio.com](http://www.bnlbio.com)

08.2013



**B&L Biotech USA, Inc.**

225 E. City Avenue, Suite 107, Bala Cynwyd, PA 19004 USA

TEL +1 (610) 668 2595, (610) 668 2596

Toll free (877) 452-2651 (Only USA)

FAX +1 (610) 668-2597

[www.bnlbio.com](http://www.bnlbio.com)